

**DEPARTMENT OF THE ARMY TECHNICAL MANUAL**

**ORGANIZATIONAL MAINTENANCE REPAIR PARTS  
AND SPECIAL TOOLS LISTS  
THEODOLITE, DIRECTIONAL; 1/10 SECOND;  
23 IN. LONG TELESCOPE; ELECTRICAL ILLUMINATION;  
W/3 CARRYING CASES; FIXED LEG TRIPOD  
(WILD HEERBRUGG MODEL T4A 63)  
FSN 6675-089-8584  
Current as of 27 June 1969**

**Headquarters, Department of the Army, Washington, D. C.  
9 January 1970**

**TABLE OF CONTENTS**

	Paragraph	Page
LIST OF ILLUSTRATIONS		ii
SECTION I. INTRODUCTION		
Scope	1	iii
General	2	iii
Explanation of columns	3	iii
Special information	4	v
How to locate repair parts	5	v
Abbreviations	6	v
Federal supply codes for manufacturers	7	v
Recommendations for maintenance publications improvement	8	vi
II. PRESCRIBED LOAD ALLOWANCE		vii
III. REPAIR PARTS FOR ORGANIZATIONAL MAINTENANCE		
Group 01 Packing Case, Base		1
02 Packing Case Suspension Level		1
03 Accessories, Case and Tool		2
04 Battery Box Assembly		3
05 Telescope Assembly		3
06 Level Assembly, Suspension		4
07 Mirror Assembly, Illumination		4
08 Light Extension, Handlamp		4
09 Tripod Assembly		4
SECTION IV. SPECIAL TOOLS, TEST AND SUPPORT EQUIPMENT-NOT APPLICABLE		
V. FEDERAL STOCK NUMBER AND REFERENCE NUMBER INDEX		21

LIST OF ILLUSTRATIONS

Number	Title	Page
1	Packing Case, Base	6
2	Packing Case, Suspension Level	7
3	Accessories Case and Tools	8
4	Case Assembly, Accessory	9
5	Packing Case, Telescope	10
6	Battery Box Assembly	11
7	Telescope Assembly	12
8	Axis, Telescope Assembly	13
11	Circle Assembly, Vertical	14
17	Level Assembly, Suspension	15
20	Mirror Assembly, Illumination	16
31	Circle, Setting	17
32	Handlamp	18
33	Rheostat and Cables	19
34	Tripod Assembly	20

## SECTION I

### INTRODUCTION

1. Scope

**This manual lists repair parts, special tools, test and support equipment required for the performance of organizational maintenance of the the 'o-lite.**

2. General

**This repair parts and special tools list is divided into the following sections:**

**a. Prescribed Load Allowance (PLA)—Section II. A composite listing of the repair parts, special tools, test and support equipment having quantitative allowances for initial stockage at the organizational level.**

**b. Repair Parts—Section III. A list of repair parts authorized for the performance of maintenance at the organizational level in figure and item number sequence.**

**c. Special Tools, Test and Support Equipment—Section IV. (not applicable.)**

**d. Federal Stock Number and Reference Number Index—Section V. A list of Federal stock numbers in ascending numerical sequence followed by a list of reference numbers in ascending alpha-numeric sequence, cross-referenced to the illustration figure number and item number.**

Note. Items not illustrated are cross-referenced to group number.

3. Explanation of Columns

**The following provides an explanation of columns in the tabular lists in sections II, III, and IV:**

**a. Source, Maintenance, and Recoverability Codes (SMR).**

Note. Common hardware items known to be readily available in Army supply channels are assigned Maintenance codes only. Source codes, Recoverability codes, and Maintenance Allowances are not assigned this category.

(1) Source codes indicates the selection status and source for the listed item. Source codes are:

code	Explanation
P	Repair parts which are stocked in or supplied from the GSA/DSA, or Army supply system and authorized for use at indicated maintenance categories.

coda

Explanation

P2

Repair parts which are procured and stocked for insurance purposes because the combat or military essentiality of the end item dictates that a minimum quantity be available in the supply system.

M

Repair parts which are not procured or stocked, but are to be manufactured in indicated maintenance levels.

A

Assemblies which are not procured or stocked as such, but are made up of two or more units. Such component units carry individual stock numbers and descriptions, are procured and stocked separately and can be assembled to form the required assembly at indicated maintenance categories.

X

Parts and Assemblies which are not procured or stocked and the mortality of which normally is below that of the end item or component. The failure of such part or assembly should result in retirement of the end item from the supply system.

X1

Repair parts which are not procured or stocked. The requirement for such items will be filled by use of the next higher assembly or component.

X2

Repair parts which are not stocked. The indicated maintenance category requiring such repair parts will attempt to obtain same through cannibalization. Where such repair parts are not obtainable through cannibalization, requirements will be requisitioned, with accompanying justification, through norm81 supply channels.

C

Repair parts authorized for local procurement. Where such repair parts are not obtainable from local procurement, requirements will be requisitioned through norm81 supply channels accompanied by a supporting statement of nonavailability from local procurement.

G

Major assemblies that are procured with PEMA funds for initial issue only as exchange assemblies of DSU and GSU level. These assemblies will not be stocked above DS and GS level or returned to depot supply level.

(2) Maintenance code indicates the lowest category of maintenance authorized to install the listed item. The maintenance level code is:

Code	Explanation
O	Organizational Maintenance
	(3) Recoverability code, indicates whether unserviceable items should be returned for recovery or salvage. Items not coded are expendable. Recoverability codes are :

Code	Explanation
R	Applied to repair parts (assemblies and components) which are considered economically repairable at direct and general support maintenance levels. When the maintenance capability to repair these items does not exist, they are normally disposed of at the GS level. When supply considerations dictate, some of these repair parts may be listed for automatic return to supply for depot level repair as set forth in AR 710-50. When so listed, they will be replaced on an exchange basis.
S	Repair parts and assemblies which are economically repairable at DSU and GSU activities and which normally furnished by supply on an exchange basis. When items are determined by a GSU to be uneconomically repairable, they will be evacuated to a depot for evaluation and analysis before final disposition.
T	High dollar value recoverable repair parts which are subject to special handling and are issued on an exchange basis. Such repair parts normally are repaired or overhauled at depot maintenance activities.
U	Repair parts specifically selected for salvage by reclamation units because of precious metal content, critical materials, or high dollar value reuseable casings or castings.

b. Federal Stock Number. This column indicates the Federal stock number assigned to the item and will be used for requisitioning purposes.

c. Description. This column indicates the Federal item name and any additional description of the item required, Assembly components and sub-assemblies are indented under major assemblies. The abbreviation "w/e", when used as part of the nomenclature, indicates the Federal stock number includes all armament, equipment, accessories, and repair parts issued with the item. A part number or other reference number is followed by the applicable five-digit Federal supply code for manufacturers in parenthesis. Repair parts quantities included in kits and sets are shown in front of the repair part name. Material required for manufacture or fabrication is identified.

d. Unit of Measure (U/M). A two-character

alphabetic abbreviation indicating the amount or quantity of the item upon which the allowance are based, e.g., ft, ea, pr, etc.

e. Quantity Incorporated in Unit. This column indicates the quantity of the item used in the assembly group, A "V" appearing in this column in lieu of a quantity indicates that a definite quantity cannot be indicated (e.g., shims, spacers, etc).

f. Fifteen-Day Organizational Maintenance Allowance.

(1) The allowance columns are divided into four subcolumns. Indicated in each subcolumn opposite the first appearance of each item is the total quantity of items authorized for the number of equipments supported. Subsequent appearances of the same item will have the letters "REF" in the allowance column. To locate the referenced item, locate the FSN or reference number in the index. The earliest figure and item number is the referenced item. Items authorized for use as required but not for initial stockage are identified with an asterisk in the allowance column.

(2) The quantitative allowance for organizational level of maintenance represents one initial prescribed load for a 15-day period for the number of equipments supported. Units authorized additional prescribed loads, multiply the number of prescribed loads by the quantity in the appropriate density column to determine the number of repair parts authorized.

(3) To determine allowances when supporting more than 100 of these equipments: First, divide the number of equipments supported by 100 moving the decimal two spaces left; second, multiply the result by the quantity in the 51-100 density column. Example, authorized allowance for 51-100 equipment is 40; for 150 equipments, multiply 40 by 1.50 or 60 parts authorized.

(4) subsequent changes to allowances will be limited as follows: No change in the range of items is authorized. If additional items are considered necessary, recommendation should be forwarded to U. S. Army Mobility Equipment Command for exception or revision to the allowance list. Revisions to the range of items authorized will be made by the U. S. Army Mobility Equipment Command based upon engineering experience, demand data, or TAERS information.

*g. Illustration.* This column is divided as follows:

(1) Figure number. Indicates the figure

number of the illustration in which the item is shown.

(2) *Item number.* Indicates the callout number used to reference the item in the illustration.

4. Special Information

a. **Repair parts mortality has been based on 1000 hours of operation per year.**

b. **Parts which require manufacture or assembly at a category higher than that authorized for installation will indicate in the source column the higher category.**

c. **The following publications pertain to the Theodolite and its components.**

TM 5-6675-297-15 **Operator, Organizational, Direct and General Support, and Depot Maintenance Repair Parts and Special Tools Lists**

TM 5-6675-297-35P **Direct and General Support and Depot Maintenance Repair Parts and Special Tool Lists**

f. The illustrations in this manual are identical to the applicable illustrations published in the -35P, Direct and General Support and Depot Maintenance Repair Parts and Special Tools List manual, and the figure numbers are the same as appear in that manual. The -35P illustrations are given for a better understanding of the parts relationship, however, only those parts assigned maintenance code "0" are listed in the tabular portion and only these parts are authorized for requisitioning from this manual.

5 How to Locate Repair Parts

a. When Federal stock number or reference number is unknown:

(1) First. Using the table of contents, determine the assembly group within which the repair part belongs. This is necessary since illustrations are prepared for assembly groups and listings are divided into the same groups.

(2) Second. Find the illustration covering the assembly group to which the repair part belongs.

(3) Third. Identify the repair part on the

illustration and note the **illustration figure and item number of the repair part.**

(4) Fourth. Using the Repair Part Listing, find the assembly to which the repair part belongs and locate the illustration figure and item number noted on the illustration.

b. When the Federal stock number or reference number is known:

(1) First. Using the Index of Federal Stock Numbers and Reference Numbers find the pertinent Federal stock number or reference number. This index is in ascending FSN sequence followed by a list of reference numbers in alpha-numeric sequence, cross-referenced to the illustration figure number and item number.

(2) Second. Using the Repair Part Listing, find the assembly group of the repair part and the illustration figure number and item number referenced in the Index of Federal Stock Numbers and Reference Numbers.

c. When the Federal stock number or reference number is known and the repair part is not illustrated.

(1) First. Using the Index of Federal Stock Numbers and Reference Numbers find the pertinent Federal stock number or reference number in the section titled Items not Illustrated and note the group number. This section of the index is in ascending FSN sequence followed by a list of reference numbers in alpha-numeric sequence, cross-referenced to assembly group number.

(2) Second. Using the Table of Contents, locate the assembly group number and page number.

(3) Third. Using the applicable group number and page number locate the pertinent stock number or reference number in the Repair Parts Listing. Items which are not illustrated are listed at the end of the assembly group to which they belong.

6. Abbreviations

amp	ampere(s)
v	volt(e)

7. Federal Supply Codes for Manufacturers

Code	Explanation
89905	Wild Heerbrugg Instruments inc.
81348	Federal Specifications Promulgated by General Services Administration

TM 5-6675-297-20P

8. Recommendations for Maintenance  
Publications Improvements

Report of errors, omissions, and recommendations for improving this publication by the individual user is encouraged. Reports should be submitted

on DA Form 2028 (Recommended Changes to Publications) and forwarded direct to Commanding General, U. S. Army Mobility Equipment Command, ATTN: AMSME-MPP, 4300 Good: fellow Boulevard, St. Louis, Mo. 63120.

## SECTION II

### PRESCRIBED LOAD ALLOWANCE

(1) Federal Stock Number	(2) Description  usable on code	(3) 15-day org maint. alw			
		(A) 1-5	(B) 6-20	(C) 21-50	(D) 51-100
3120-130-03729	<b>GROUP 03— ACCESSORIES, CASE AND TOOLS</b>				<b>2</b>
	<b>SCREWDRIVER, JEWELERS</b>				<b>2</b>
	GGG-S121 (81438)				<b>2</b>
5120-247-0868	<b>TWEEZERS</b>				<b>2</b>
	GGT00870 (81348)				<b>2</b>
5120-746-6276	<b>SCREWDRIVER, JEWELERS</b>				<b>2</b>
	HDW1-4 (89905)				<b>2</b>
5120-746-6277	<b>WRENCH, KEY</b>				<b>2</b>
	T4A247 (89905)				<b>2</b>
5120-746-6279	<b>WRENCH, SPANNER</b>				<b>2</b>
	T4A942A (89905)				<b>2</b>
5120-961-2761	<b>SCREWDRIVER, JEWELERS</b>				<b>2</b>
	HDW1-2 (89905)				<b>2</b>
6675-120-0140	<b>LAMP, INCANDESCENT: sitting</b>	<b>2</b>	<b>2</b>	<b>4</b>	<b>8</b>
	HEG3-2 (89905)				<b>2</b>
6675-353-4103	<b>PIN, ADJUSTING</b>			<b>2</b>	<b>2</b>
	3A55 (89905)				<b>2</b>
6675-715-3085	<b>ADAPTER, ELECTRICAL LAMP</b>				<b>2</b>
	T21-4 (89905)				<b>2</b>
6675-739-9864	<b>CONTAINER</b>				<b>2</b>
	HDF3-12-7403 (89905)				<b>2</b>
6675-739-9872	<b>PIN, ADJUSTING</b>			<b>2</b>	<b>2</b>
	T4A963 (89905)				<b>2</b>
6675-739-9877	<b>APPLICATOR, OIL</b>				<b>2</b>
	12299-5A (89905)				<b>2</b>
7920-746-6273	<b>BRUSH, DUSTING</b>			<b>2</b>	<b>2</b>
	HDP-1 (89905)				<b>2</b>
8330-965-1722	<b>CHAMOIS LEATHER, SHEEPSKIN</b>				<b>2</b>
	KKC00300 (81348)				<b>2</b>
	<b>SCREWDRIVER, FLAT TIP</b>				<b>2</b>
	13369-11 (89905)				<b>2</b>
	<b>SCREWDRIVER, FLAT TIP</b>				<b>2</b>
	13369-10 (89905)				<b>2</b>
	<b>SCREWDRIVER, FLAT TIP</b>				<b>2</b>
	13369-9 (89905)				<b>2</b>
	<b>GROUP 07— BASE ASSEMBLY, ALIDADE</b>				<b>2</b>
	<b>MIRROR ASSEMBLY, ILLUMINATION</b>			<b>2</b>	<b>2</b>
	T1A29001 (89905)				<b>2</b>

(1) SMR CODE	(2) FEDERAL STOCK NUMBER	(3) DESCRIPTION	(4) USABLE ON CODE	(5) UNIT OF MEAS	(6) QTY INC IN UNIT	(6) 15-DAY ORGANIZATIONAL MAINTENANCE ALW				(7) ILLUS- TRATION	
						(a)	(b)	(c)	(d)	(a)	(b)
						1-5	6-20	21-50	51-100	FIG. NO.	ITEM NO.
		REF NUMBER & MFR CODE									
		SECTION III REPAIR PARTS FOR ORGANIZATIONAL MAINTENANCE									
		GROUP 01 CKING CASE, BASE									
X20		PACKING CASE, BASE GVP22 (89905)		EA	1					1	1
X20		SCREW: KNOB RETAINING T4A837 (89905)		EA	3					1	2
X20		KNOB, MILLED: BASE RETAINING T4A836 (89905)		EA	3					1	3
X20		WASHER: BASE RETAINING T4A835 (89905)		EA	3					1	4
X20		PIN, STRAIGHT, THREADED: SCREW PIN RETAINING T4A834A (89905)		EA	3					1	5
X20		BASE, STAR: BASE RETAINING T4A832A (89905)		EA	1					1	6
X20		PIN, STRAIGHT, HEADLESS VSM12770-4X60 (89905)		EA	3					1	7
X20		SCREW: STAR BASE T4A833 (89905)		EA	6					1	8
		GROUP 02 CKING CASE SUSPENSION LEVEL									
P 0	6675-121-0511	PACKING, CASE, S T4A950A (89905)		EA	1	*	*	*	*	2	1
X1		CASE: SUSPENS T4A951 (89905)		EA	1					2	2
X20		HINGE: SUSPENS T4A952 (89905)		EA	1					2	3
X20		SCREW, WOOD: HINGE MTG VSM12801-2X12 (89905)		EA	14					2	4
X20		NUT, ROUND: H DIN54645 (89905)		EA	2					2	5
X20		WASHER, FLAT: S DIN125-3-2 (89905)		EA	6					2	6
X20		SCREW, WOOD: C VSM12801-2X10 (89905)		EA	48					2	7
X20		CORNER GVP303-0014 (89905)		EA	8					2	8
X20		WASHER: SUSPEN GVP303-00020 (89905)		EA	2					2	9
X20		SCREW, MACHINE DIN88-5X20 (89905)		EA	2					2	10
X20		HANDLE: SUSPEN T4A947 (89905)		EA	1					2	11
X20		LOCK: SUSPENS HDS7-16 (89905)		EA	2					2	12
X20		SCREW: LOCK MT SCH2-9 (89905)		EA	8					2	13
X20		NUT, ROUND: LO DIN54643 (89905)		EA	8					2	14

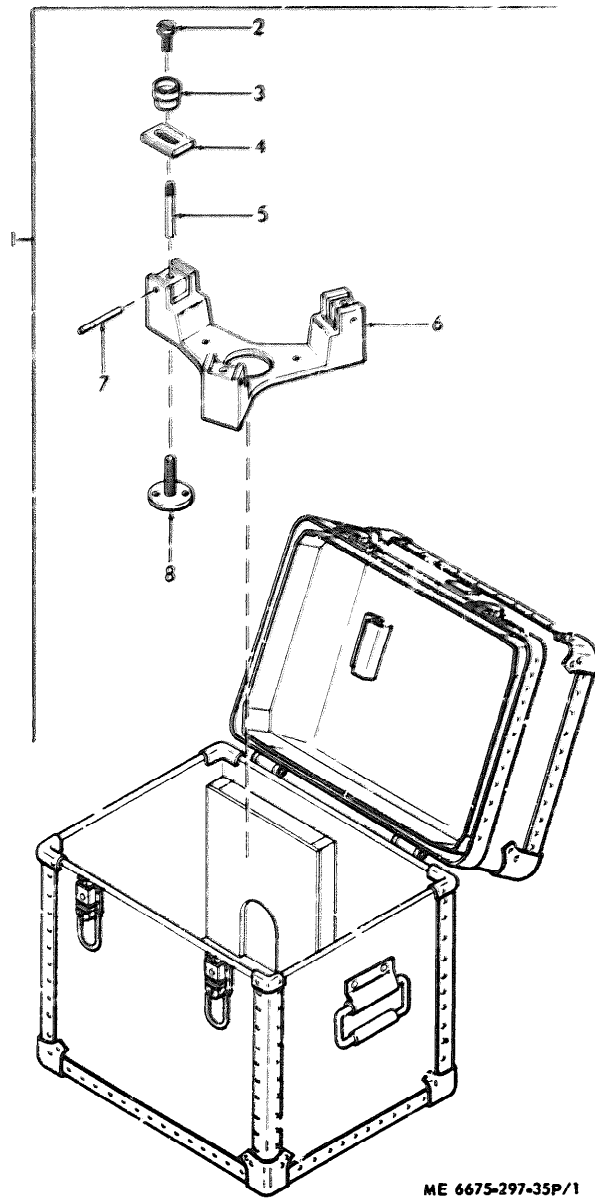


(1) SMR CODE	(2) FEDERAL STOCK NUMBER	(3) DESCRIPTION  REF NUMBER & MFR CODE	(4) UNIT OF MEAS	(5) QTY INC IN UNIT	(6) 15-DAY ORGANIZATIONAL MAINTENANCE ALLOW				(7) ILLUS- TRATION			
					(a)	(b)	(c)	(d)	(a)	(b)		
					1-5	6-20	21-50	51-100	FIG. NO.	ITEM NO.		
		<b>GROUP 03 ACCESSORIES, CASE AND TOOLS</b>										
X20		ACCESSORY CASE WITH ACCESSORIES AT4-139 (89905)	EA	1					3	1		
P O	88330-965-1722	CHARMIS LEATHER, SHEEP SKIN KK000300 (81348)	EA	1	*	*	*	2	3	2		
P O	7920-746-6273	BRUSH, DUSTING HDPT-1 (89905)	EA	2	*	*	*	2	3	3		
P O	5120-961-2761	SCREWDRIVER, JEWELERS HDW1-2 (89905)	EA	1	*	*	*	2	3	4		
P O	5120-10-0729	SCREWDRIVER, JEWELER GG03121 (81438)	EA	1	*	*	*	2	3	5		
P O	5120-746-6276	SCREWDRIVER, JEWELERS HDW1-4 (89905)	EA	1	*	*	*	2	3	6		
P O	5120-746-6279	WRENCH, SPANNER T4A942A (89905)	EA	1	*	*	*	2	3	7		
P O	6675-739-9872	PIN, ADJUSTING T4A963 (89905)	EA	2	*	*	*	2	3	8		
P O	5120-746-6277	WRENCH, KEY T4A247 (89905)	EA	1	*	*	*	2	3	9		
P O	5120-247-0868	TWEEZERS GGT00870 (81348)	EA	1	*	*	*	2	3	10		
P O	6675-715-3085	ADAPTER, ELECTRICAL LAMP T21-4 (89905)	EA	2	*	*	*	2	3	11		
P O	6675-120-0140	LAMP, INCANDESCENT: SETTING, 3-TV, 0.30 AMP HEG3-2 (89905)	EA	2	2	2	4	8	3	18		
P O	5120-222-8852	SCREWDRIVER, FLAT TIP 13369-11 (89905)	EA	1	*	*	*	2	3	21		
P O	5120-236-2127	SCREWDRIVER, FLAT TIP 13369-10 (89905)	EA	1	*	*	*	2	3	22		
P O	5120-227-7319	SCREWDRIVER, FLAT TIP 13369-9 (89905)	EA	1	*	*	*	2	3	23		
P O	6675-120-0140	LAMP, INCANDESCENT HEG3-2 (89905)	EA	8	REF	REF	REF	REF	3	24		
P O	6675-353-4103	PIN, ADJUSTING 3A55 (89905)	EA	4	*	*	*	2	2	3	25	
P O	6675-739-9864	CONTAINER, GLASS HDF3-12-7403 (89905)	EA	1	*	*	*	2	3	26		
P O	6675-739-9877	APPLICATOR, OIL 12299-5A (89905)	EA	1	*	*	*	2	3	27		
P O R	6675-168-0846	CASE ASSEMBLY, ACCESSORY T4A970A (89905)	EA	1	*	*	*	*	4	1		
X20		NUT, HEXAGON: STOP PLATE MTG D1H934M2 (89905)	EA	2						4	2	
X20		WASHER, FLAT: STOP PLATE MTG R-2-5X0-5 (89905)	EA	2							3	
X20		STOP PLATE: ACCESSORY CASE 13328-32 (89905)	EA	1							4	
X20		BRACKET: STOP PLATE MTG T4A997 (89905)	EA	2							4	5
X1		CASE, ACCESSORY T4A971 (89905)	EA	1							4	6
X20		HINGE, ACCESSORY CASE T4A989 (89905)	EA	1							4	7

(1) SMR CODE	(2) FEDERAL STOCK NUMBER	(3) DESCRIPTION	(4) US-31E ON CODE	(5) UNIT OF MEAS	(6) QTY INC IN UNIT	(6) 15-DAY ORGANIZATIONAL MAINTENANCE ALW				(7) ILLUS- TRATION	
						(a)	(b)	(c)	(d)	(e)	(f)
						1-5	6-20	21-50	51-100	FIG. NO.	ITEM NO.
X20		CORNER HDB2-1 (89905)		EA	8					4	8
X20		SCREW, WOOD: BRACKET VSM12801-2X10 (89905)		EA	38					4	9
X20		LOCK, ACCESSORY CASE HDS7-16 (89905)		EA	2					4	10
X20		SCREW, WOOD: LOCK MTG VSM12801-2X12 (89905)		EA	14					4	11
X20		WASHER 8-3-5X0-5 (89905)		EA	2					4	12
X20		SCREW, MACHINE: HANDLE MTG DIN68-5X20 (89905)		EA	2					4	13
X20		HANDLE, CASE T4A947 (89905)		EA	1					4	14
X20		DRAWER, ACCESSORY CASE T4A990 (89905)		EA	1					4	15
X20		BRACKET, LAMP SOCKET T4A995 (89905)		EA	1					4	16
X20		NUT, ROUND: HANDLE MTG DIN54645 (89905)		EA	2					4	17
X20		WASHER, FLAT: HANDLE MTG GVP303-00020 (89905)		EA	2					4	18
X20		PACKING CASE, TELESCOPE GVP23 (89905)		EA	1					5	1
GROUP 04 BATTERY BOX ASSEMBLY											
P O	6675-739-9866	BATTERY BOX ASSEMBLY T4A1020 (89905)		EA	1	*	*	*	*	6	1
GROUP 05 TELESCOPE ASSEMBLY											
P O	6675-435-7592	SHADE, OPTICAL INSTRUMENT T4A1123 (89905)		EA	1	*	*	*	*	7	3
X20		SIGHT, TELESCOPE T4A1135 (89905)		EA	1					7	15
X20		HOUSING, LAMP T2-635F (89905)		EA	1					7	32
X20		SOCKET, LAMP T2-636 (89905)		EA	1					7	33
P O	6675-120-0140	LAMP, INCANDESCENT HEG3-2 (89905)		EA	1	REF	REF	REF	REF	7	34
X20		SCREW, MACHINE: SIGHT MTG DIN85-2X6 (89905)		EA	2					8	5
X20		SIGHT, NOTCHED: TELESCOPE SIGHT T4A279 (89905)		EA	1					8	6
P O	6675-120-0140	LAMP, INCANDESCENT: SITTING CIRCLE HEG3-2 (89905)		EA	1	REF	REF	REF	REF	11	20
X20		SOCKET, LAMP: SITTING CIRCLE T2-636 (89905)		EA	1					11	21
X20		HOUSING, LAMP: SITTING CIRCLE T2-635F (89905)		EA	1					11	22

(1) NSR CODE	(2) FEDERAL STOCK NUMBER	(3) DESCRIPTION  REF NUMBER & MFR CODE	(4) UNIT OF MEAS	(5) QTY INC IN UNIT	(6) 15-DAY ORGANIZATIONAL MAINTENANCE ALLOW				(7) ILLUS- TRATION	
					(a)	(b)	(c)	(d)	(e)	(f)
					1-5	6-20	21-50	51-100	FIG. NO.	ITEM NO.
		<b>GROUP 06</b> VEL ASSEMBLY								
P O R	6650-168-0845	LEVEL ASSEMBLY: SUSPENSION T4A707-1960 (89905)	EA	1	*	*	*	*	17	1
		<b>GROUP 07</b> MIRRO ASSEMBLY, AVIADAE								
P O	6675-739-9876	MIRROR ASSEMBLY: ILLUMINATION T1A29007 (89905)	EA	2	*	*	2	2	20	1
P O	6675-120-0140	LAMP: INCANDESCENT HEG3-2 (89905)	EA	2	REF	REF	REF	REF	30	16
X20		LAMPHOLDER: 3.1 ING CIRCLE T2-636 (89905)	EA	1					30	17
X20		COVER: LAMP HOUSING T2-635F (89905)	EA	1					30	18
		<b>GROUP 08</b> LIGHT, EXTENSION, HANDLAMP								
P O	6230-462-0466	HAND LIGHT GEB12-00000 (89905)	EA	1	*	*	*	*	32	1
P O	6675-120-0140	LAMP: INCANDESCENT HEG3-2 (89905)	EA	1	REF	REF	REF	REF	32	6
P O	6230-739-9862	LIGHT, EXTENSION: EMERGENCY EB75 (89905)	EA	1	*	*	*	*	33	1
P O	6675-120-0140	LAMP: INCANDESCENT HEG3-2 (89905)	EA	1	REF	REF	REF	REF	33	10
P O	6675-739-9876	CABLE ASSEMBLY: CHRONOGRAPH XT4-20 (89905)	EA	1	*	*	*	*	33	11
P O	6675-894-6305	CABLE ASSEMBLY: MICROSCOPE EYEPIECE XT4-18 (89905)	EA	1	*	*	*	*	33	15
P O	6675-739-9874	CABLE ASSEMBLY: VERTICAL CIRCLE ILLUMINATION XT4-17 (89905)	EA	1	*	*	*	*	33	23
P O	6675-220-1896	CABLE SWITCH: RHEOSTAT ASSEMBLY T4A1040 (89905)	EA	1	*	*	*	*	33	30
		<b>GROUP 09</b> TRIPOD ASSEMBLY								
X20		TRIPOD ASSEMBLY: THEODOLITE T4A930 (89905)	EA	1					34	1
X20		COVER: TRIPOD HEAD T4A1031 (89905)	EA	1					34	2
X20		SCREW: CENTER MTC CAZ3-4X8-5 (89905)	EA	1					34	3
X20		INSERT: EYE BOLT T4A933 (89905)	EA	1					34	4
X20		BOLT, EYE: CENTER T4A934N (89905)	EA	1					34	5
X20		PIN: SCREW LOCATING VSM12771-2-5X14 (89905)	EA	3					34	6
X20		SCREW, MACHINE: HINGE MTC T4A935 (89905)	EA	3					34	7
X20		HEAD ASSEMBLY T4A931-932 (89905)	EA	1					34	8
X20		RETAINER: LEG HINGE T4A932 (89905)	EA	3					34	9

(4) SWR CODE	(2) FEDERAL STOCK NUMBER	(3) DESCRIPTION	(4) USABLE ON CODE	(5) UNIT OF MEAS	(6) QTY INC IN UNIT	(6) 15-DAY ORGANIZATIONAL MAINTENANCE ALLOW				(7) REL US- TRACTION	
						(a)	(b)	(c)	(d)	(a)	(b)
						1-5	6-20	21-50	51-100	FIG. NO.	ITEM NO.
X20		WASHER, LOCK: CLAMP PLATE AND HINGE MTG DIN127-11-2-514 (89905)		EA	15					34	10
X20		NUT, HEXAGON: HINGE MTG SCREW DIN170-3-8 8MCH (89905) (DO NOT USE STANDARD 3/8 IN. NUT. THIS NUT HAS SPECIAL THREADS)		EA	3					34	11
X20		PLATE, CLAMP: LEG LOCKING BAST4 (89905)		EA	3					34	12
X20		HINGE: LEG TO TOP PLATE BAST3 (89905)		EA	3					34	13
X20		SCREW, WOOD: LEG TO HINGE MTG VSM12801-4X20 (89905)		EA	12					34	14
X20		LEG, HALF: TRIPOD RIGHT SIDE BAST12A (89905)		EA	3					34	15
X20		SCREW, WOOD: LEG STABILIZER VSM12601-4X30 (89905)		EA	6					34	16
X20		SCREW, MACHINE: LEG SPACER MTG EB02-5X33 (89905)		EA	12					34	17
X20		WASHER, FLAT: SPACER MTG SCREW BAST17 (89905)		EA	12					34	18
X20		BELT, LEATHER: TRIPOD BAST21 (89905)		EA	1					34	19
X20		WASHER, FLAT: BELT MTG SCREW 14X40-5 (89905)		EA	2					34	20
P 0	5305-429-2875	SCREW, WOOD: BELT MTG VSM12800-5-5X20 (89905)		EA	2	*	*	*	*	34	21
X20		SHOE: TRIPOD LEG BAST35B (89905)		EA	3					34	22
X20		SCREW, WOOD: TRIPOD SHOE TO LEG VSM12801-4X17 (89905)		EA	12					34	23
X20		SCREW, MACHINE: TRIPOD LEG SHOE MTG, LOWER BAST36 (89905)		EA	3					34	24
X20		COVER: TRIPOD SHOE SPACER BAST30 (89905)		EA	3					34	25
X20		SCREW, MACHINE: TRIPOD LEG SHOE MTG, UPPER BAST32 (89905)		EA	3					34	26
X20		LEG, HALF: TRIPOD LEFT SIDE BAST11 (89905)		EA	3					34	27
X20		SPACER: TRIPOD LEG UPPER BAST13 (89905)		EA	3					34	28
X20		SCREW, MACHINE: CLAMP PLATE AND HINGE MTG DIN933-10X24 (89905)		EA	6					34	29
X20		BUSHING: UPPER SPACER BAST15 (89905)		EA	3					34	30
X20		SPACER: TRIPOD LEG, LOWER BAST14 (89905)		EA	3					34	31
X20		BUSHING: LOWER SPACER BAST16 (89905)		EA	3					34	32
X20		SPACER: TRIPOD SHOE BAST31 (89905)		EA	3					34	33



ME 6675-297-35P/1

Figure 1. Packing Case, Base

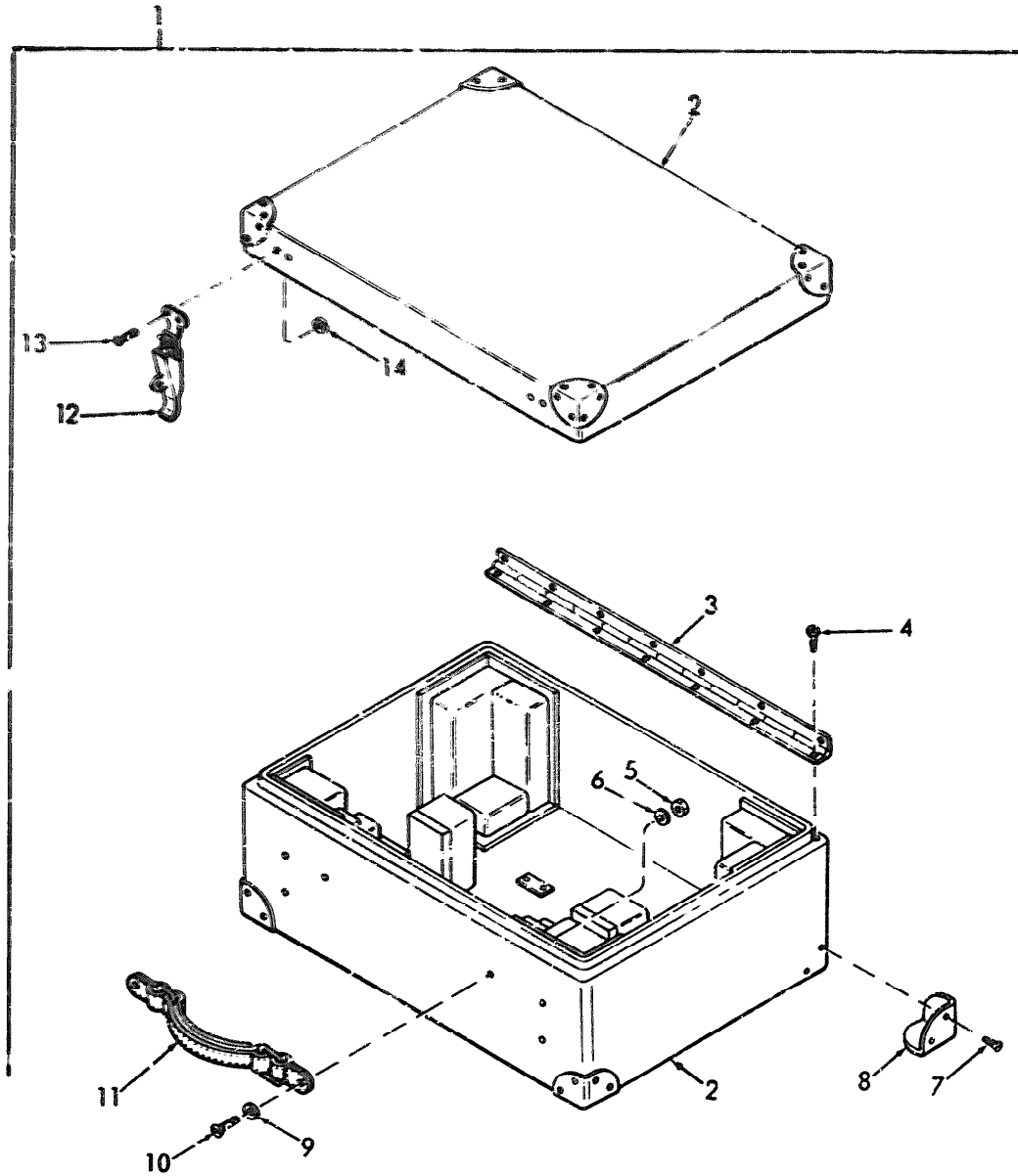


Figure 2. Packing Case, Suspension Level

ME 6675-297-35P/2

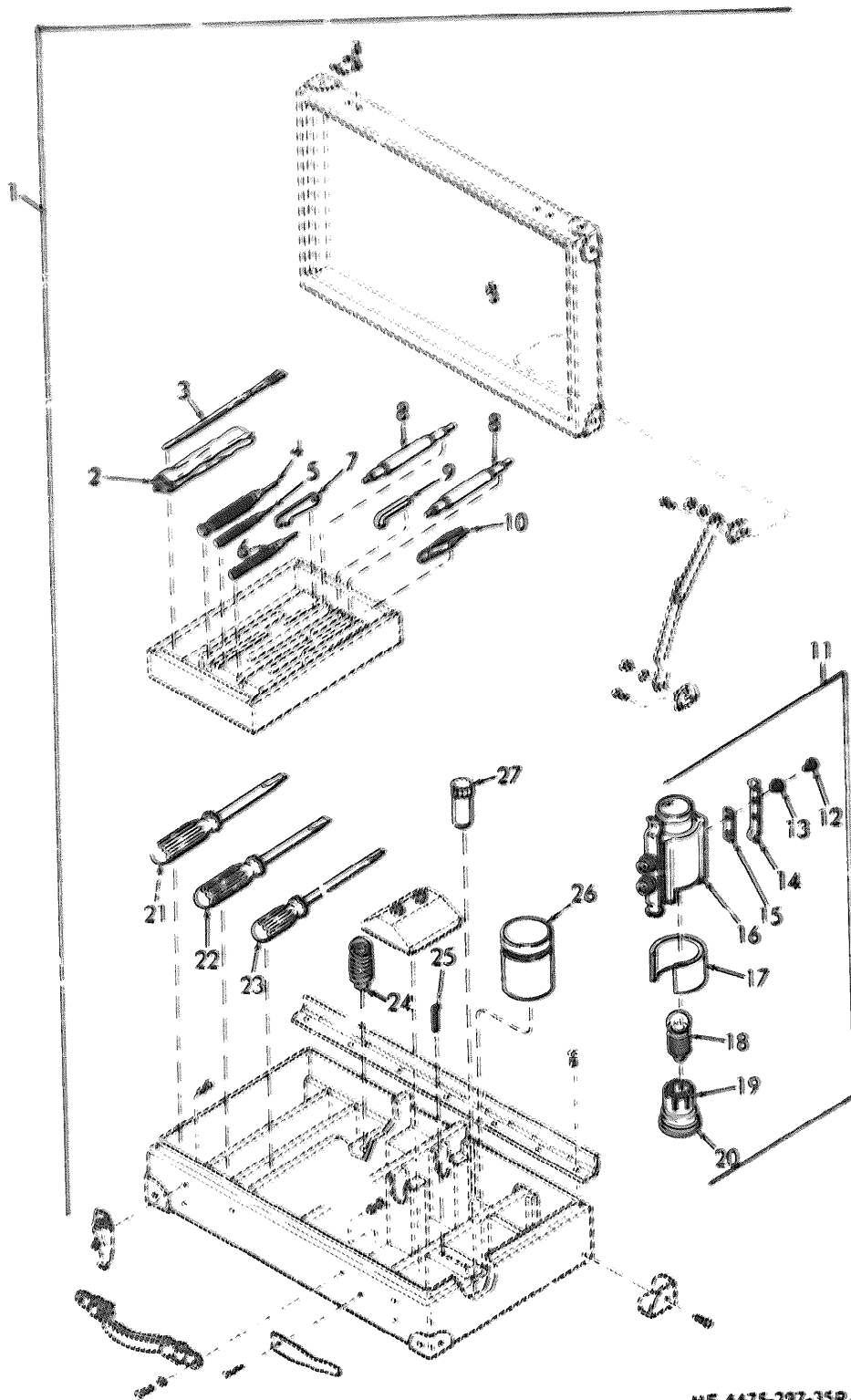
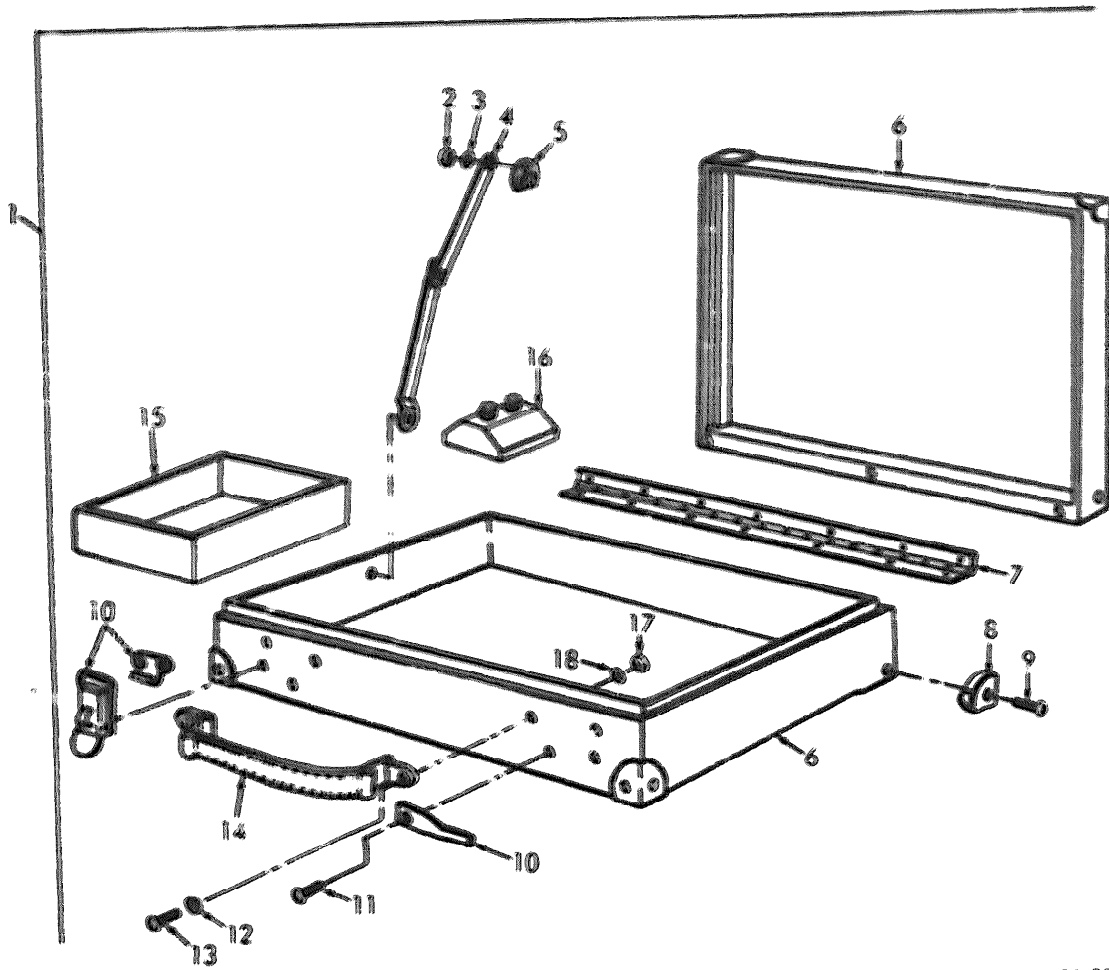


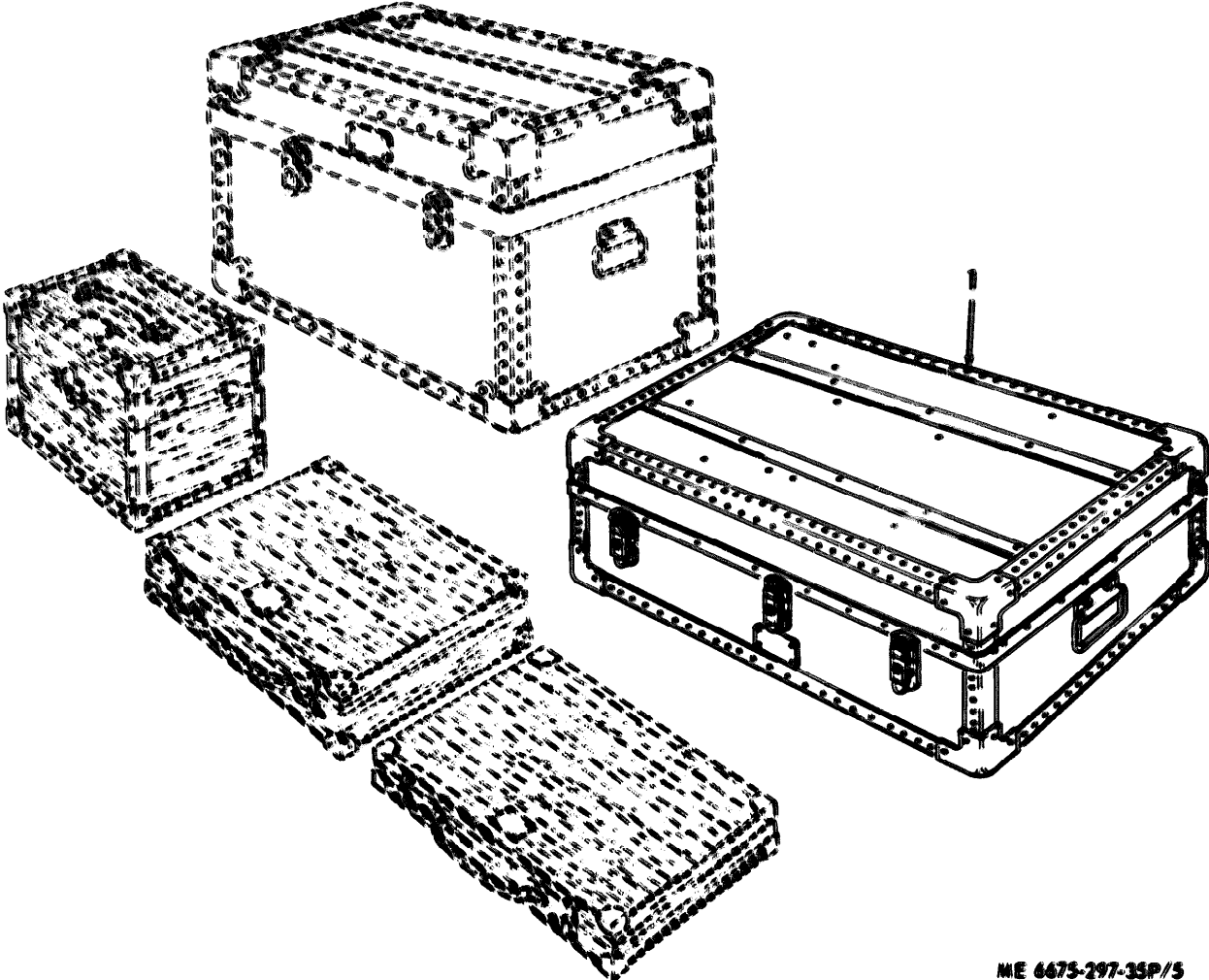
Figure 3. Accessories, Case and Tools  
ME 4475-297-35P/3



ME 6675-297-35P/4

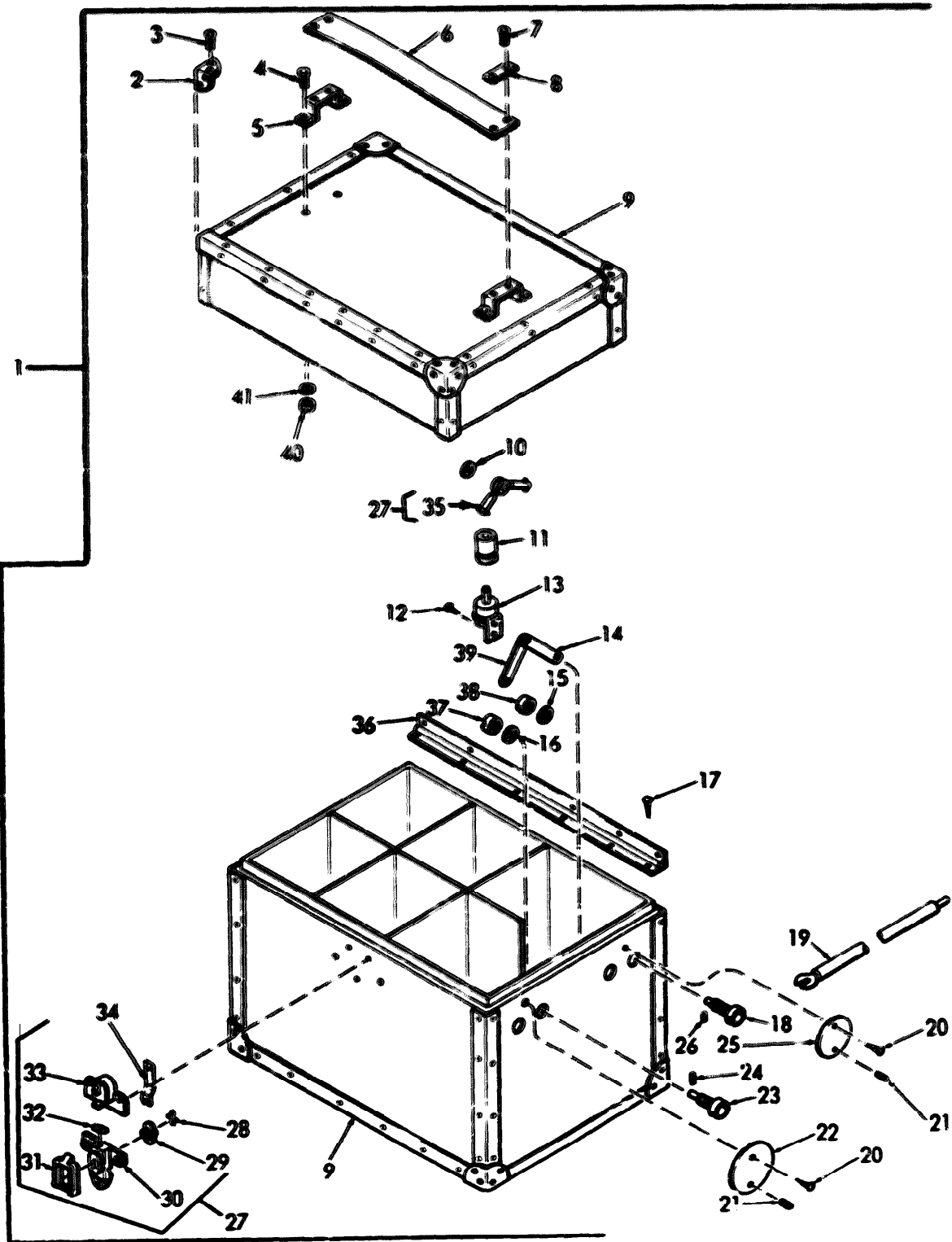
Figure 4. Case, Accessory





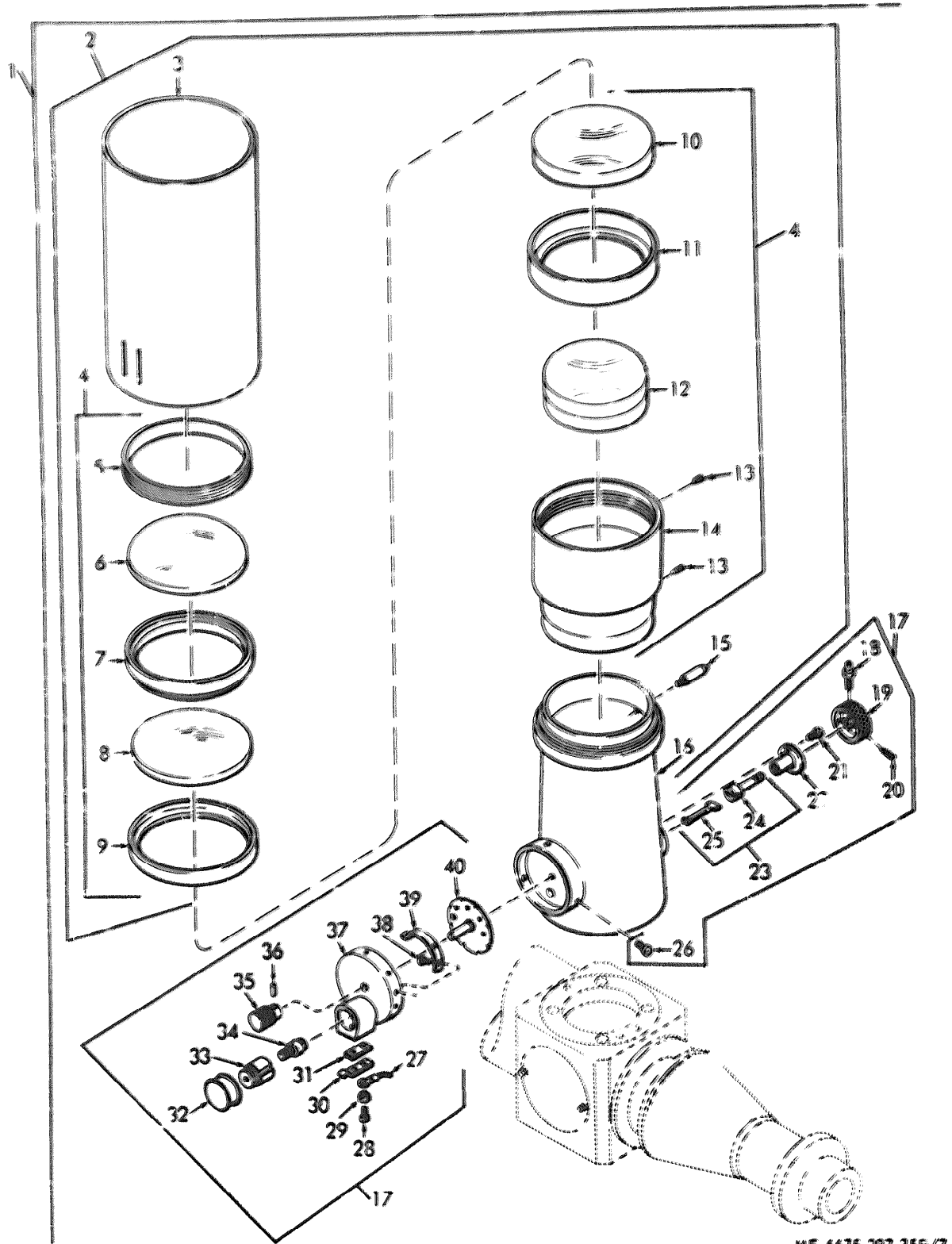
ME 6675-297-35P/5

Figure 5. **Packing Case, Telescope**



ME 6675-297-35P/6

Figure 6. Battery Box



ME 6675-297-35F/7

Figure 7. Telescope

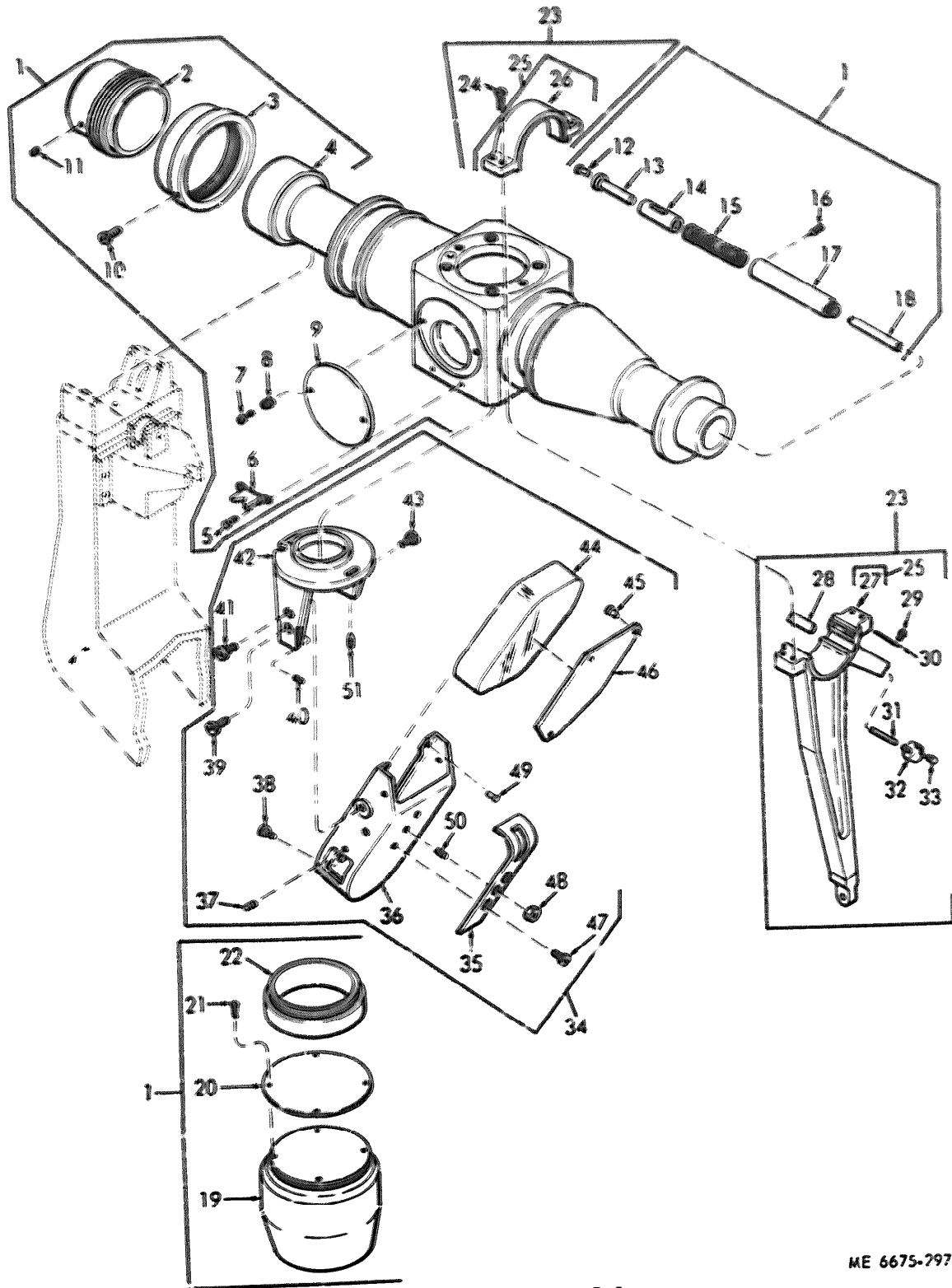


Figure 8. Axis, Telescope

ME 6675-297-35P/8

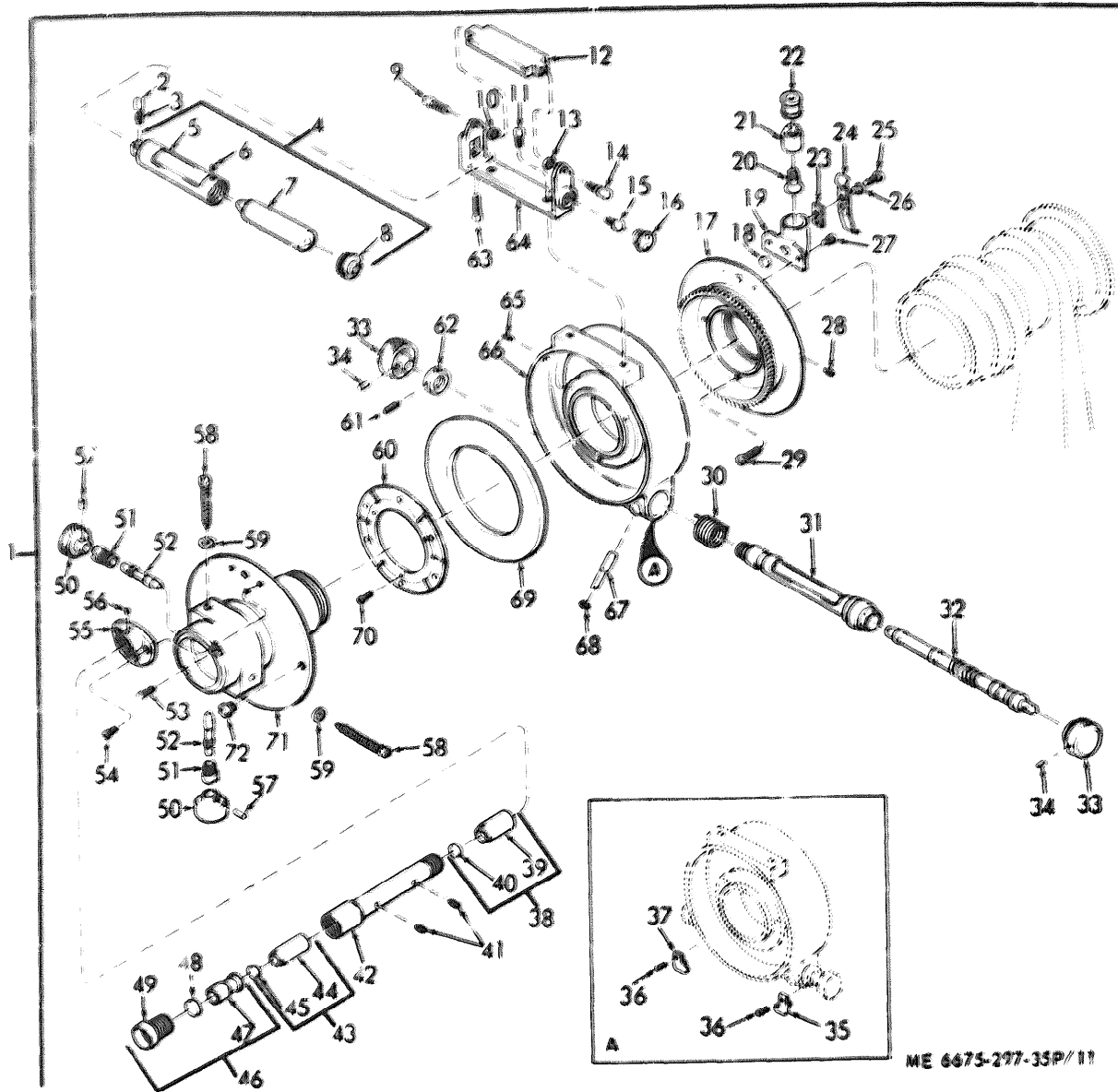


Figure 11. Circle, Vertical

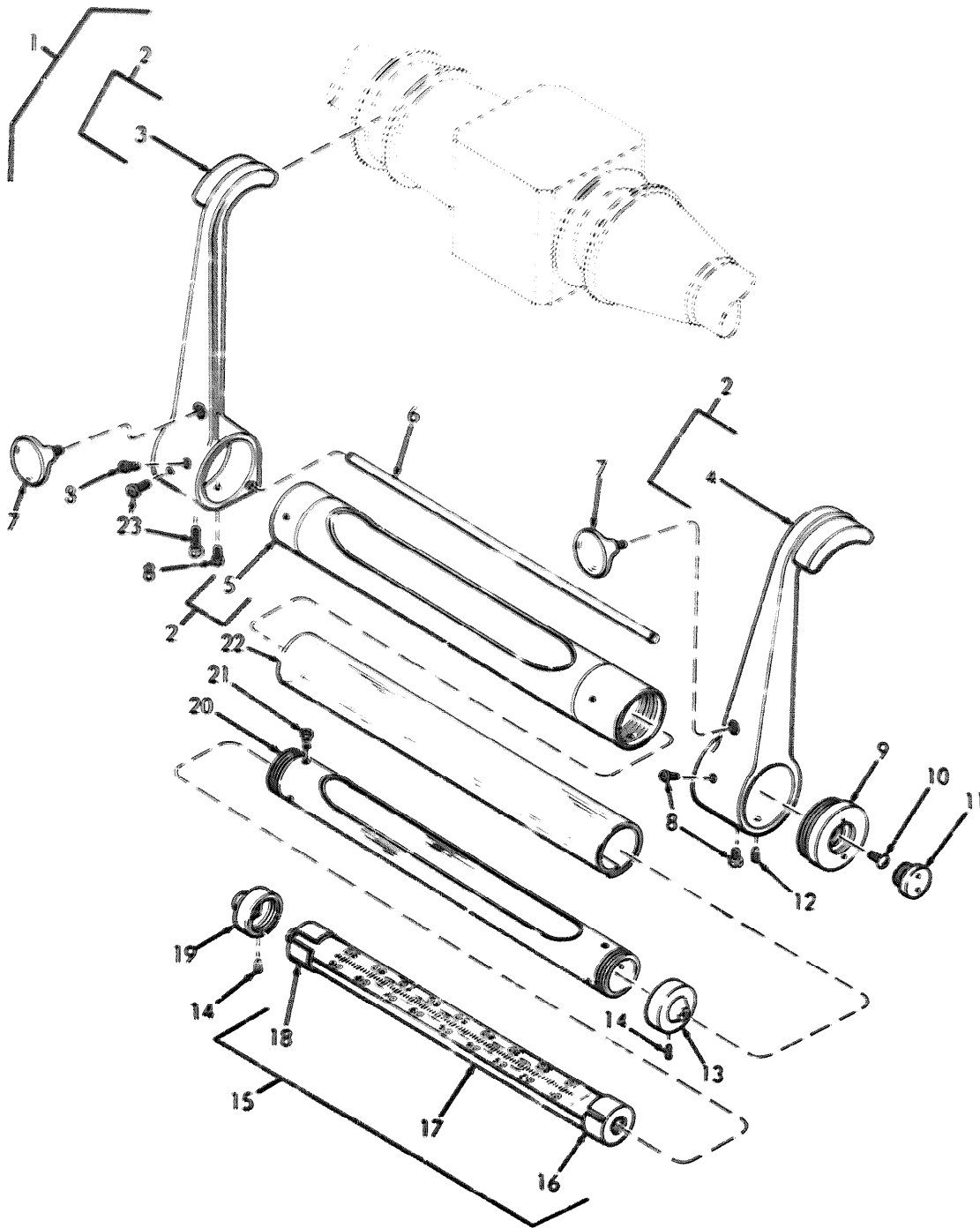


Figure 17. Level, Suspension

ME 6675-297-35P/17

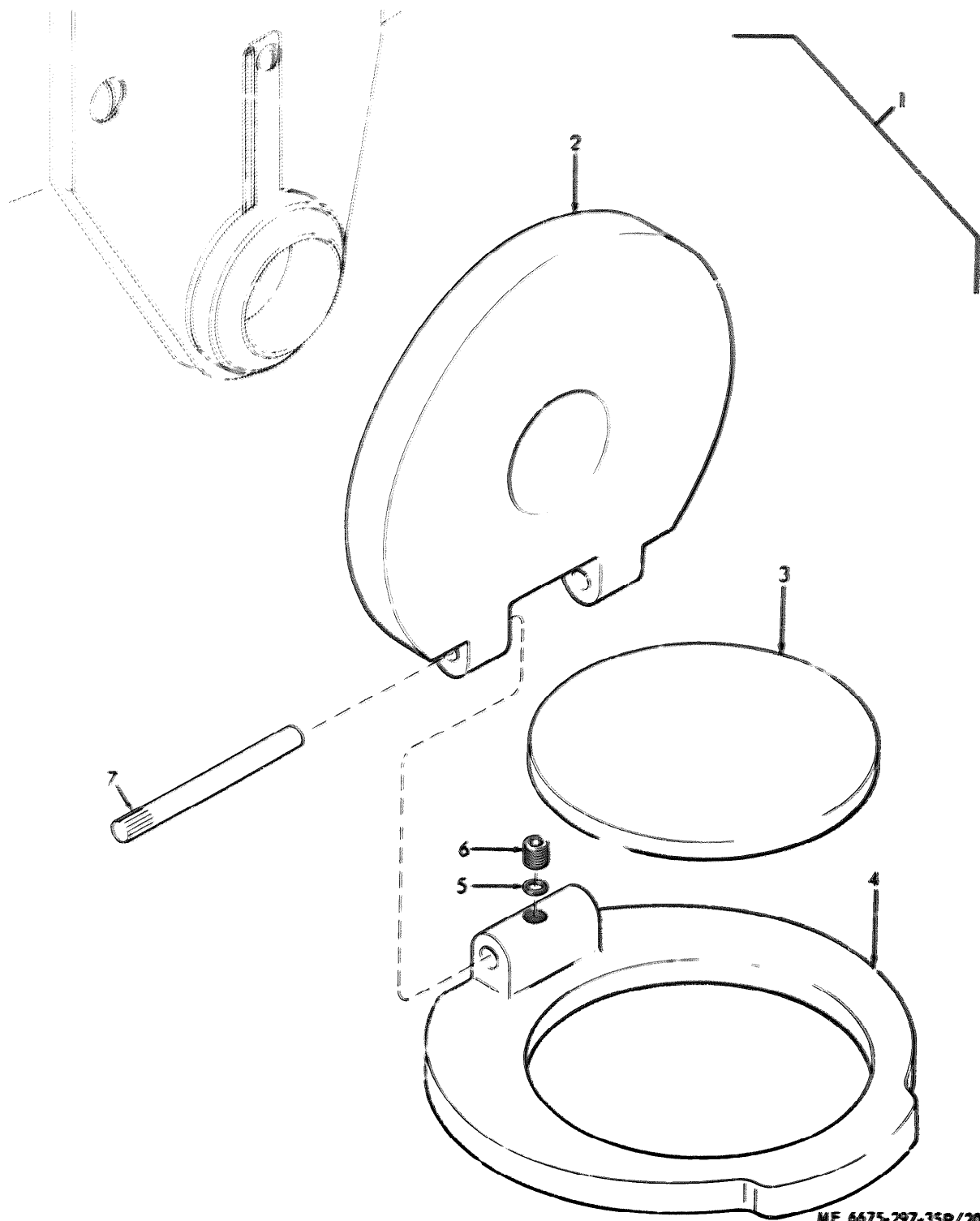
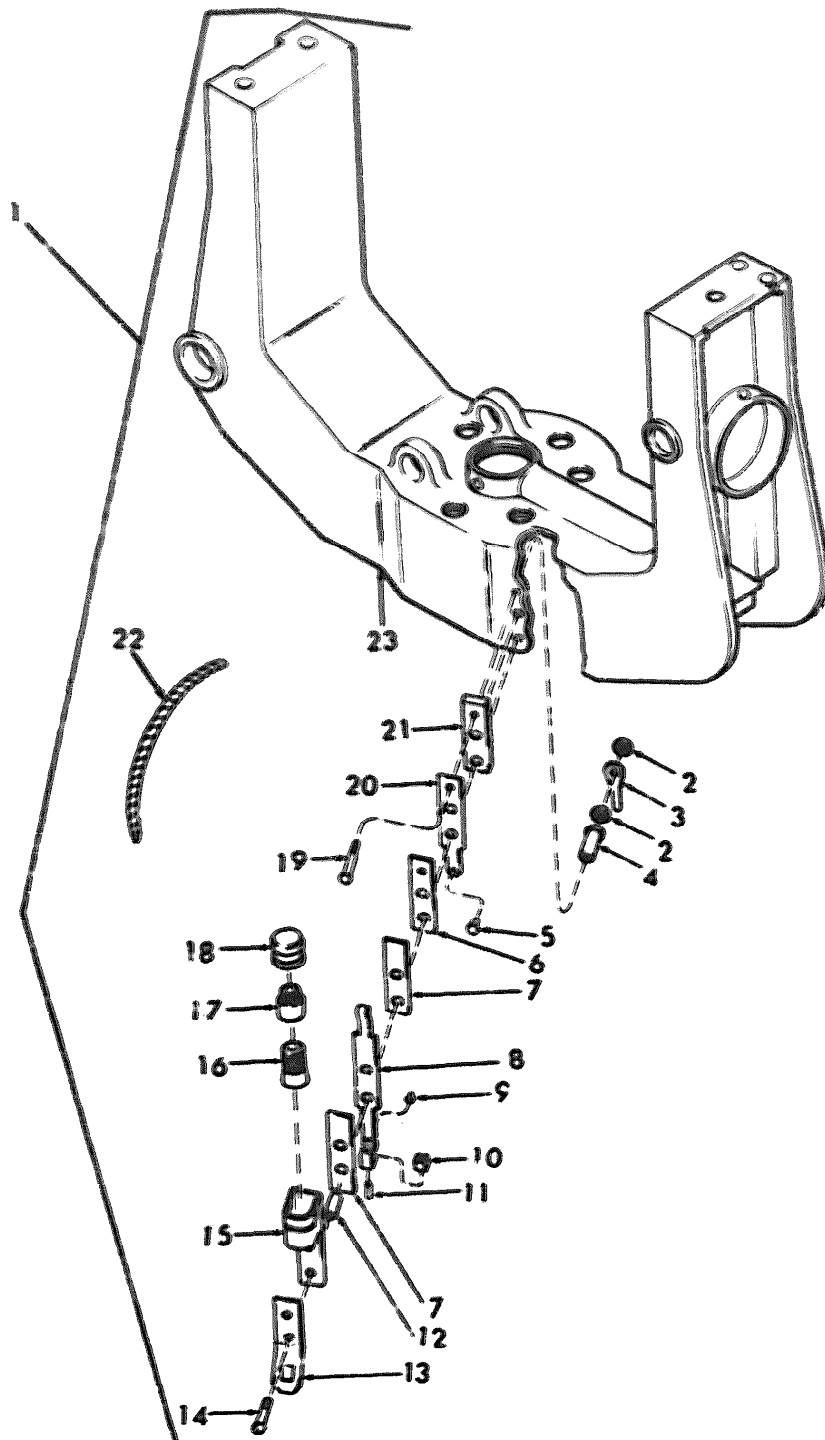


Figure 20. **Mirror, Illumination**

ME 6675-297-35P/20



ME 6675-297-35P/31

Figure 31. Circle, Setting



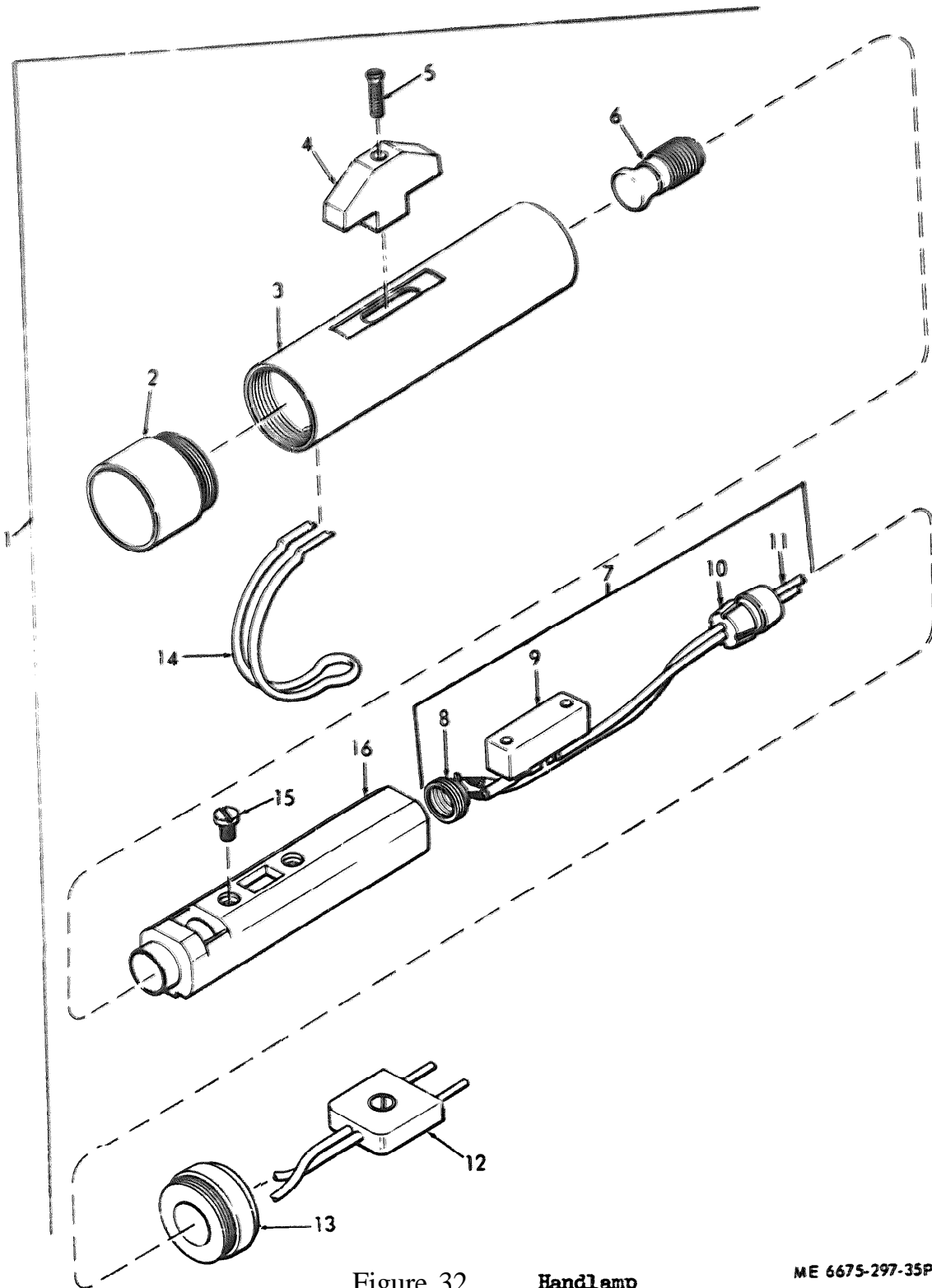
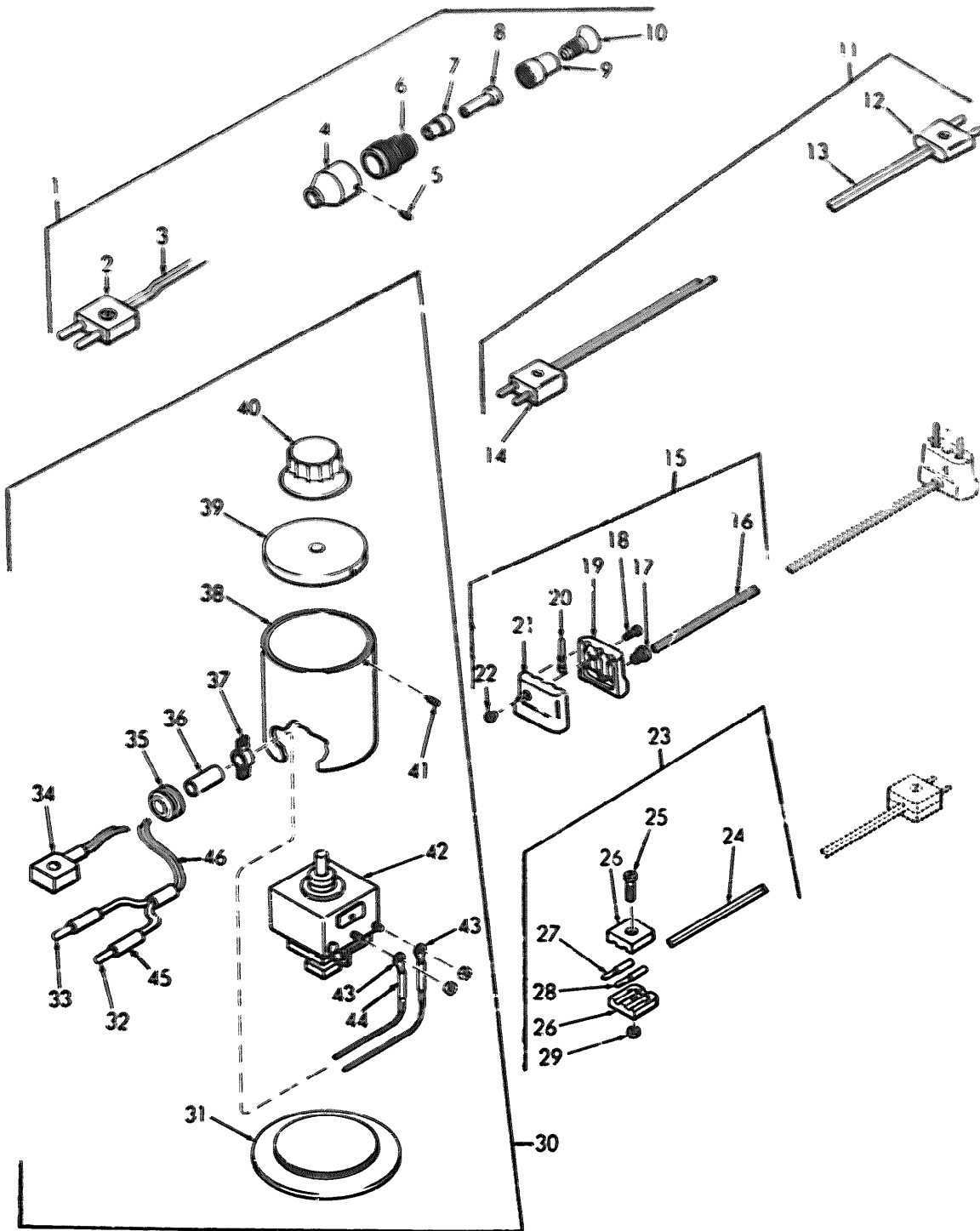


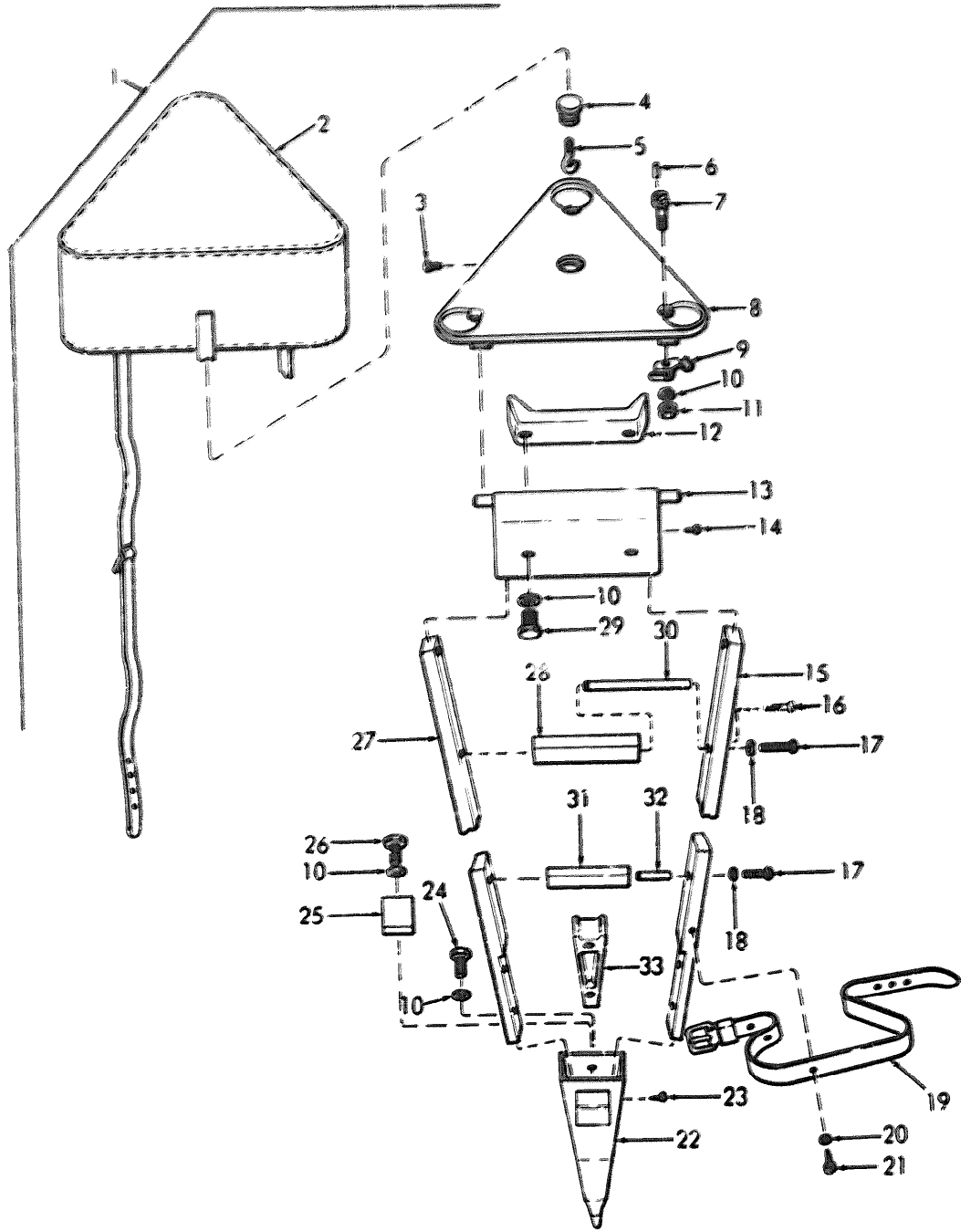
Figure 32. Handlamp

ME 6675-297-35P/32



ME 6675-297-35P/33

Figure 33. Rheostat and Cables



ME 6675-297-35P/34

Figure 34. Tripod





By order of the Secretary of the Army:

**W. C. WESTMORELAND,**  
*General, United States Army,*  
*Chief of Staff.*

Official:

**KENNETH G. WICKHAM,**  
*Major General, United States Army,*  
*The Adjutant General.*

Distribution:

To be distributed in accordance with DA Form 12-25, Section I, (qty rqr block No. 174) organizational maintenance requirements for Equipment: Surveying.

**END**

9-18-83

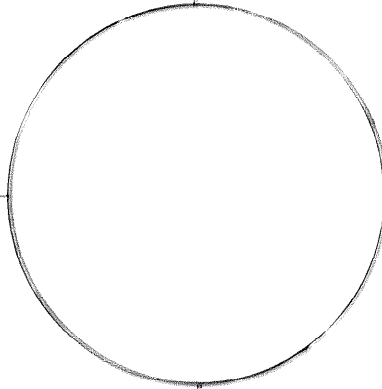
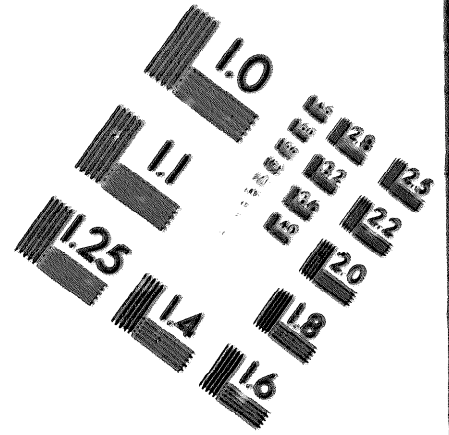
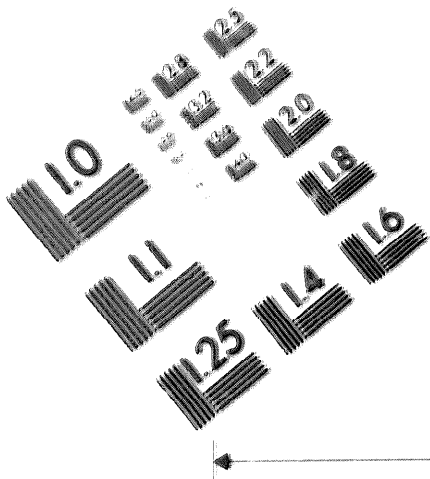
**DATE**







DEPARTMENT OF THE ARMY  
MICROFORM  
TEST TARGET



150 MM

1.0 mm (e = 0.30 mm)

ABCDEFGHIJKLMN OPQRSTUVWXYZ 1234567890  
abcdefghijklmnopqrstuvwxyz \$%&'()\*+,-./:;<=>@\*

1.5 mm (e = 0.45 mm)

ABCDEFGHIJKLMN OPQRSTUVWXYZ 1234567890  
abcdefghijklmnopqrstuvwxyz \$%&'()\*+,-./:;<=>@\*

2.0 mm (e = 0.60 mm)

ABCDEFGHIJKLMN OPQRSTUVWXYZ  
abcdefghijklmnopqrstuvwxyz  
1234567890 \$%&'()\*+,-./:;<=>@\*

2.5 mm (e = 0.75 mm)

ABCDEFGHIJKLMN OPQRSTUVWXYZ  
abcdefghijklmnopqrstuvwxyz  
1234567890 \$%&'()\*+,-./:;<=>@\*

1.0 mm (e = 0.30 mm)

ABCDEFGHIJKLMN OPQRSTUVWXYZ 1234567890  
abcdefghijklmnopqrstuvwxyz \$%&'()\*+,-./:;<=>@\*

1.5 mm (e = 0.45 mm)

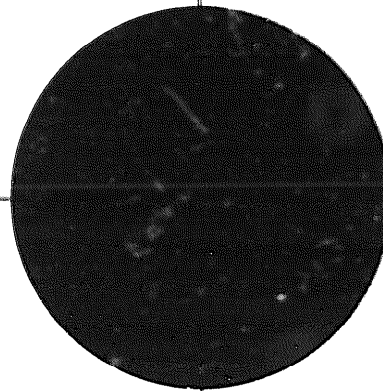
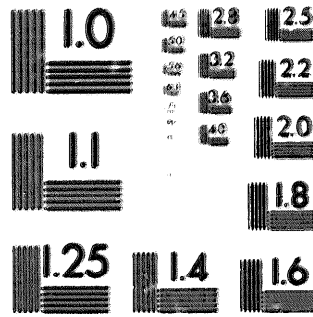
ABCDEFGHIJKLMN OPQRSTUVWXYZ 1234567890  
abcdefghijklmnopqrstuvwxyz \$%&'()\*+,-./:;<=>@\*

2.0 mm (e = 0.60 mm)

ABCDEFGHIJKLMN OPQRSTUVWXYZ  
abcdefghijklmnopqrstuvwxyz  
1234567890 \$%&'()\*+,-./:;<=>@\*

2.5 mm (e = 0.75 mm)

ABCDEFGHIJKLMN OPQRSTUVWXYZ  
abcdefghijklmnopqrstuvwxyz  
1234567890 \$%&'()\*+,-./:;<=>@\*



200 MM

250 MM

